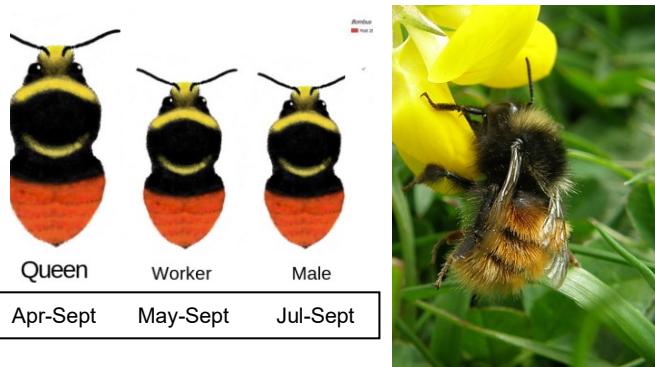


## Bilberry Bumblebee in your Garden - Identifying red-tailed bumblebees

### Bilberry Bumblebee – *Bombus monticola*

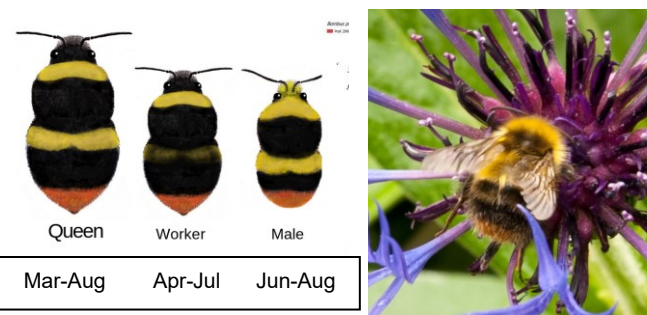


Queens, workers and males have similar colourings.

Orange-red hairs cover **more than half** the lower body (abdomen).

Wide **primrose yellow** band behind head and narrow yellow band below wings

### Early Bumblebee – *Bombus pratorum*

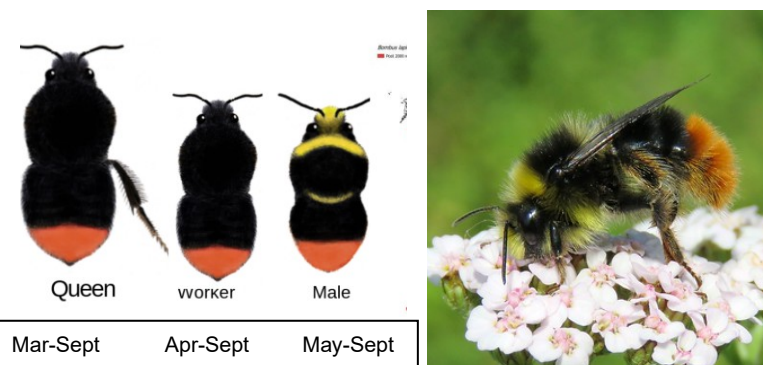


This is the UK's smallest bumblebee.

Queens, workers and males have similar colourings. Yellow band behind head and below wings. In some workers the yellow band below the wings can be missing.

Orange-red hairs cover **less than one quarter** of the lower body (abdomen).

### Red-tailed Bumblebee – *Bombus lapidarius*



The queens and workers are black apart from the red tail.

Orange-red hairs cover **less than half** the lower body (abdomen).

The male has **egg yolk yellow** bands behind the head and below the wings. **Can be confused** with the Bilberry bumblebee.