

Bilberry Bumblebee in your Garden

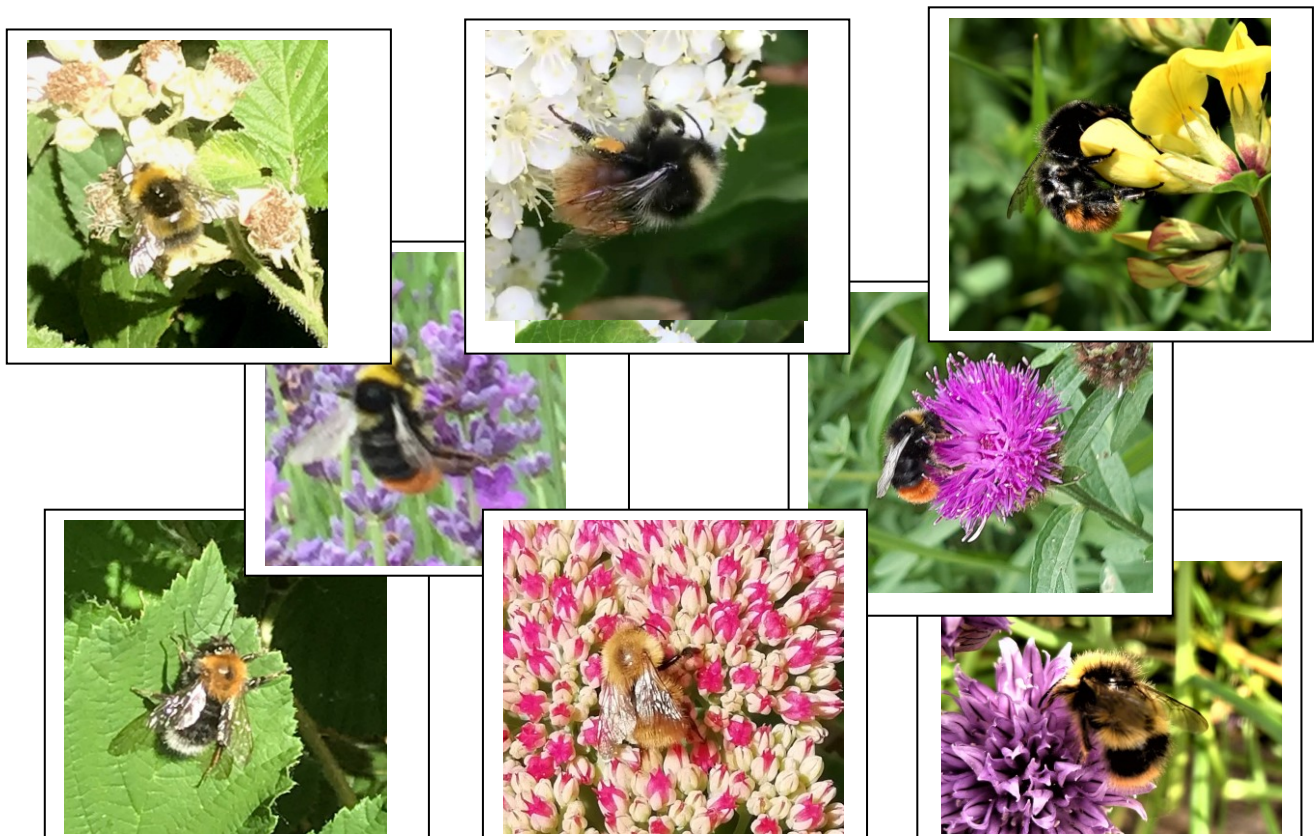
Summary Report 2020

Thank you to everyone for participating in this project. I hope it served as an opportunity to observe what is in your garden and to learn more about bumblebees.

During an unusual year, I was delighted to receive enquiries from 16 people; even if you didn't send in a report, I hope you were outside with your bumblebees during this extraordinary spring. Nine people sent in a report and we were able to discuss identification and enjoy photographs of white-tail bumblebees, tree bumblebees, early bumblebees, red-tail bumblebees and common carder bumblebees, which make up 5 of our 8 common bumblebees. There was one sighting of a Bilberry Bumblebee in All Stretton from Caroline, who sent in a video and can now wear her Bilberry Bumblebee badge with pride. I also received a photo of an unusually pale common carder bee from Lesley, which encouraged me to look at the details and search my books for an answer.

Overall, I hope you are all now bumblebee enthusiasts and may consider watching them in 2021. **I have a pocket ID guide for the 8 common bumblebees to send out to anyone who emails me their address, as a thank you for participating.**

So, can you spot which is which.....



From left to right: Early, Bilberry, Red-tail worker, Red-tail male, Red-tail male, Tree, pale Common Carder, Early male